

Slim and robust

The linear unit **LH** provides the stability and smooth running of the table leg **TA**. Thanks to its slimline design, it is also suitable for installation in a square tube. It is mainly used in place of the linear unit LA when large lifting distances are required.

Four M5 screw threads are provided to mount the linear unit.

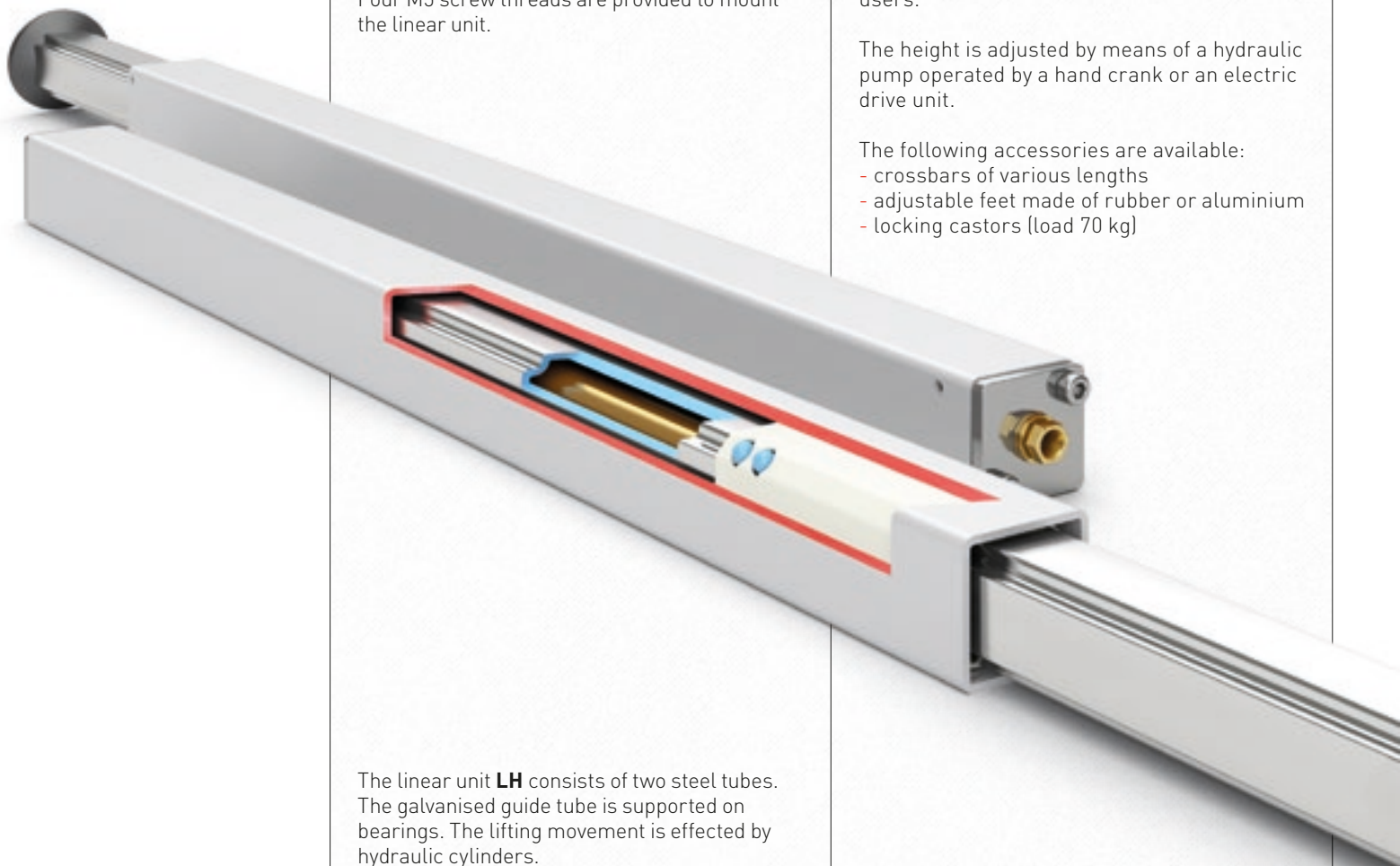
The linear units **LA** or **LH** are installed in square tubes (40 x 40 mm) in the frame **TH**. There is a wide range of different applications, including office desks, kitchen tables and work stations. Ample legroom is provided as the crossbar is mounted directly under the table top. It is therefore also suitable for use in the health care sector or for wheelchair users.

The height is adjusted by means of a hydraulic pump operated by a hand crank or an electric drive unit.

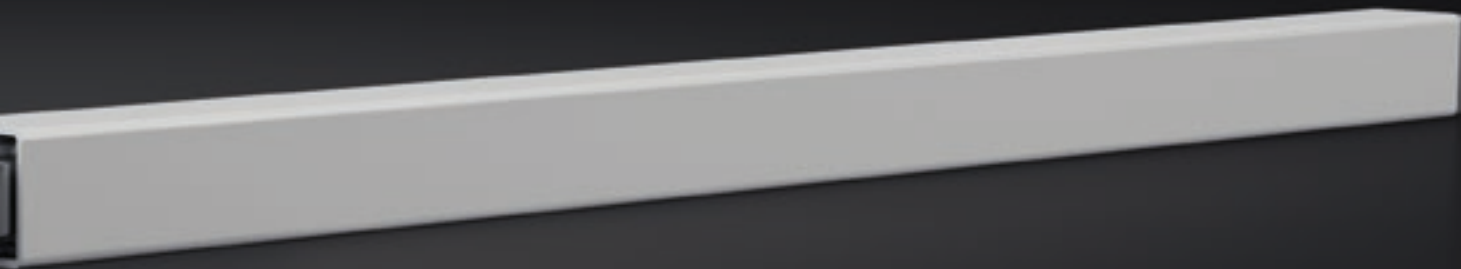
The following accessories are available:

- crossbars of various lengths
- adjustable feet made of rubber or aluminium
- locking castors (load 70 kg)

The linear unit **LH** consists of two steel tubes. The galvanised guide tube is supported on bearings. The lifting movement is effected by hydraulic cylinders.



Dimensions LH



Technical data

- Versatile linear guide rail with ball bearing guide
- Max. lifting load for each element
1,500 N (**LH 14**)
2,500 N (**LH 18**)
- Please also note the maximum load of the entire system
- Synchronous control of up to 10 table legs
- Lifting distance 400 or 500 mm
- Max. static bending moment $M_b = 200 \text{ Nm}$
- Max. dynamic bending moment $M_{bdyn} = 70 \text{ Nm}$
- The lifting element is supplied with a 4 m hydraulic hose pre-fitted as standard
- Food-grade fluids can also be used
- No additional guide rail is required
- Colour: RAL 9006 white aluminium

Typ LH	Lift	A
LH 1440	400	538 mm
LH 1450	500	638 mm

Detailed CAD drawings in various formats can be found at www.ergoswiss.com