

Robust and versatile

The table leg **TA** is ideal for assembly work stations, workbenches, office desks, built-in kitchens or in combination with aluminium profile systems with high load and stability requirements.

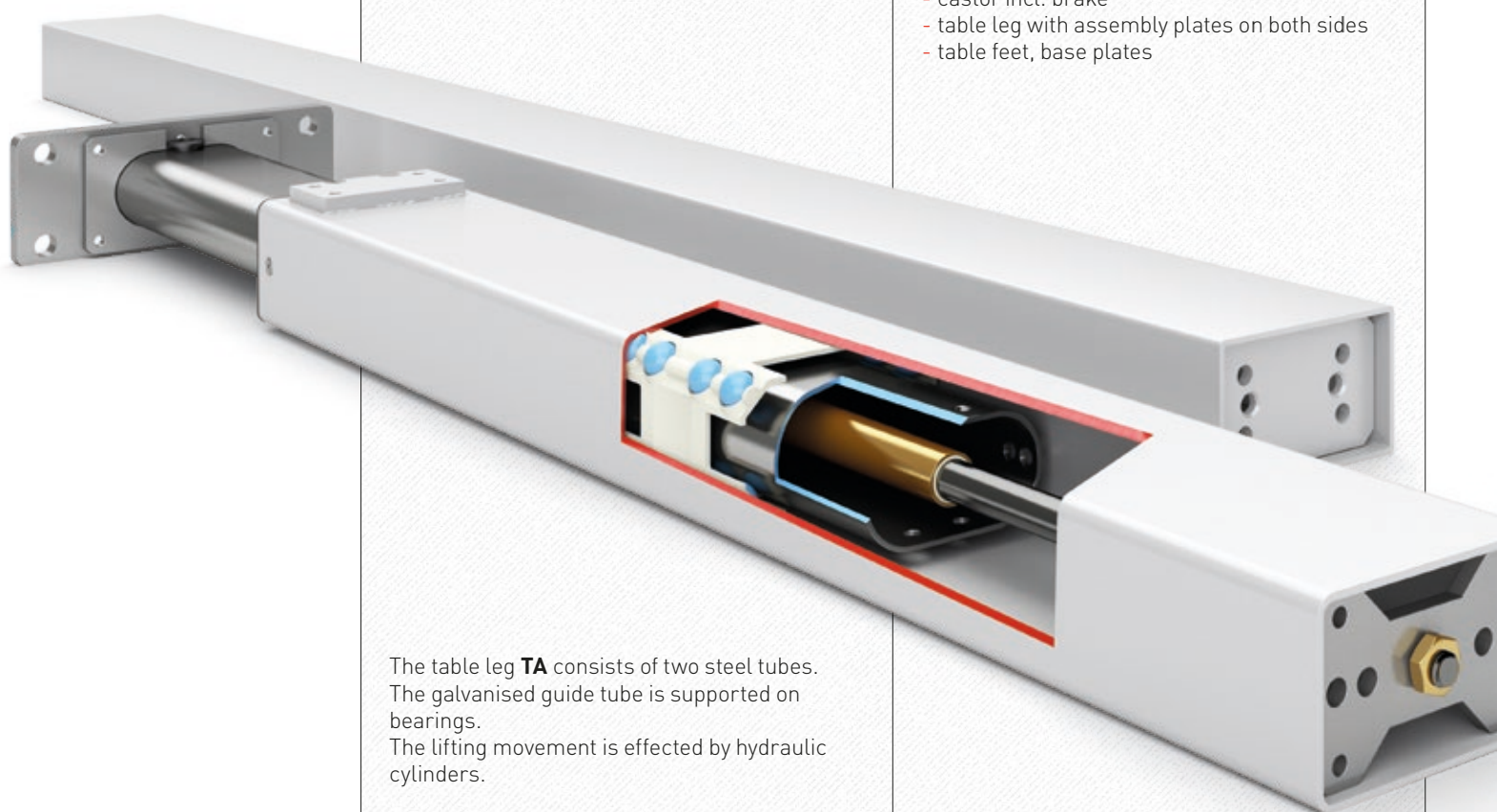
Crossbars or mounting brackets are fitted on the welded-on mounting plate. The table plate supports, crossbars and mounting brackets are supplied with all the necessary screws.

The height is adjusted by means of a hydraulic pump operated by a hand crank or an electric drive unit.

The 4-metre-long hydraulic hose is already mounted on the table leg and vented to ensure easy assembly.

The following accessories are available:

- table plate supports for mounting the table top
- crossbars of various lengths
- adjustable feet made of rubber or aluminium
- castor incl. brake
- table leg with assembly plates on both sides
- table feet, base plates



The table leg **TA** consists of two steel tubes. The galvanised guide tube is supported on bearings. The lifting movement is effected by hydraulic cylinders.

Dimensions of **TA**

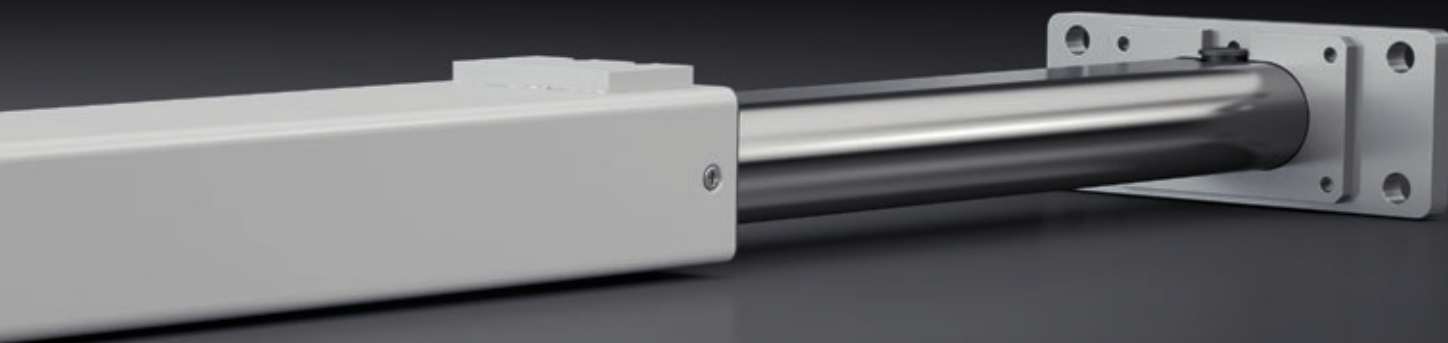


Plate carriers

B

Crossbar

80 mm
50 mm

Table feet

Accessories



Technical data

- Robust leg with ball track
- Please also note the maximum load of the entire system
- Max. load per leg:
1500 N (TA 14)
2500 N (TA 18)
- Lifting distance max.
500 mm
- Max. static bending moment $M_b = 400 \text{ Nm}$
- Max. dynamic bending moment $M_{bdyn} = 100 \text{ Nm}$
- The leg is supplied with a 4-m hydraulic hose pre-fitted as standard
- Colour: RAL 9006 white aluminium
- Other models on request

Table leg **TA**

	A	Lift
TA 1430	415 mm	300 mm
TA 1440	515 mm	400 mm
TA 1450	640 mm	500 mm

Crossbar **TA**

	B
TA 550	550 mm
TA 750	750 mm
TA 950	950 mm
TA 1150	1150 mm
TA 1550	1550 mm

Detailed CAD drawings in various formats can be found at www.ergoswiss.com