



### Slim and robust

The table leg **TM** belongs to the same design family as the table legs TL, SL and SM.

Its plain anodised aluminium housings come with a simple surface design to ensure an elegant and stylish finish in all product combinations.

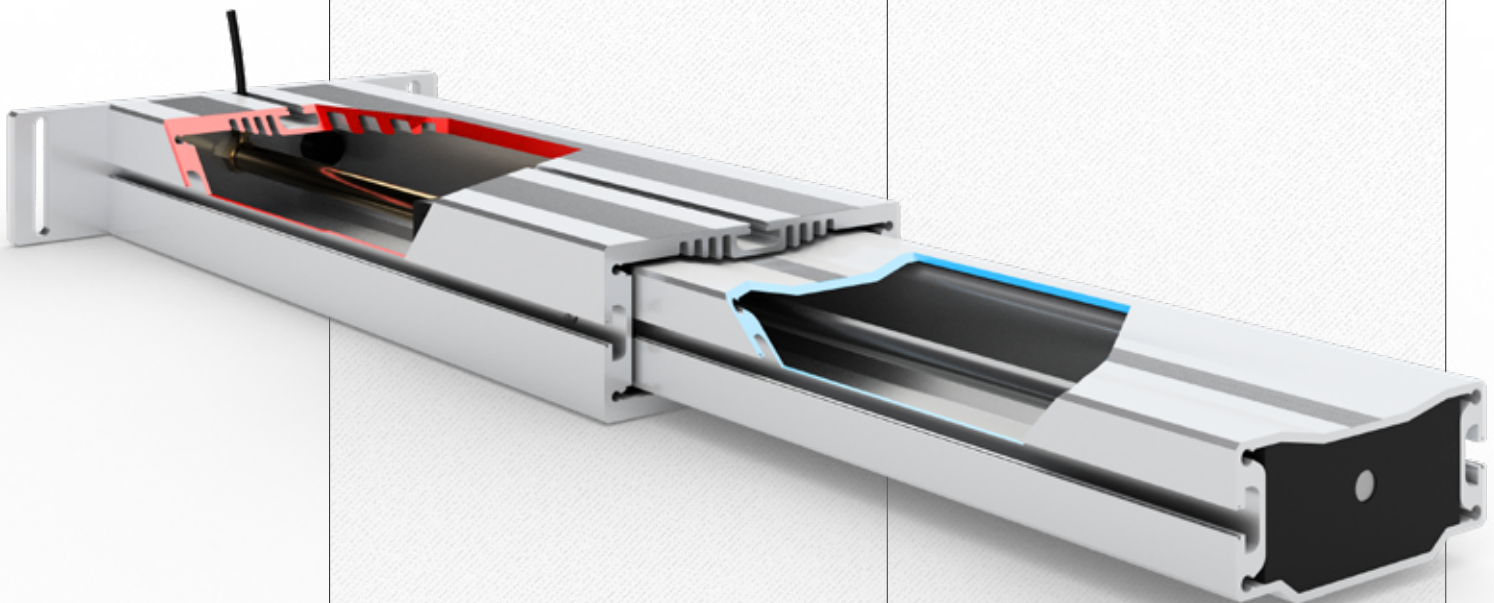
The T-slots on 3 sides (width 8 mm) allow the addition of crossbars, shelves and other attachments along the entire length of the leg. The table legs **TM** and TL are the same length and can therefore be easily combined with one another.

This design family also has a corresponding range of accessories to use in combination.

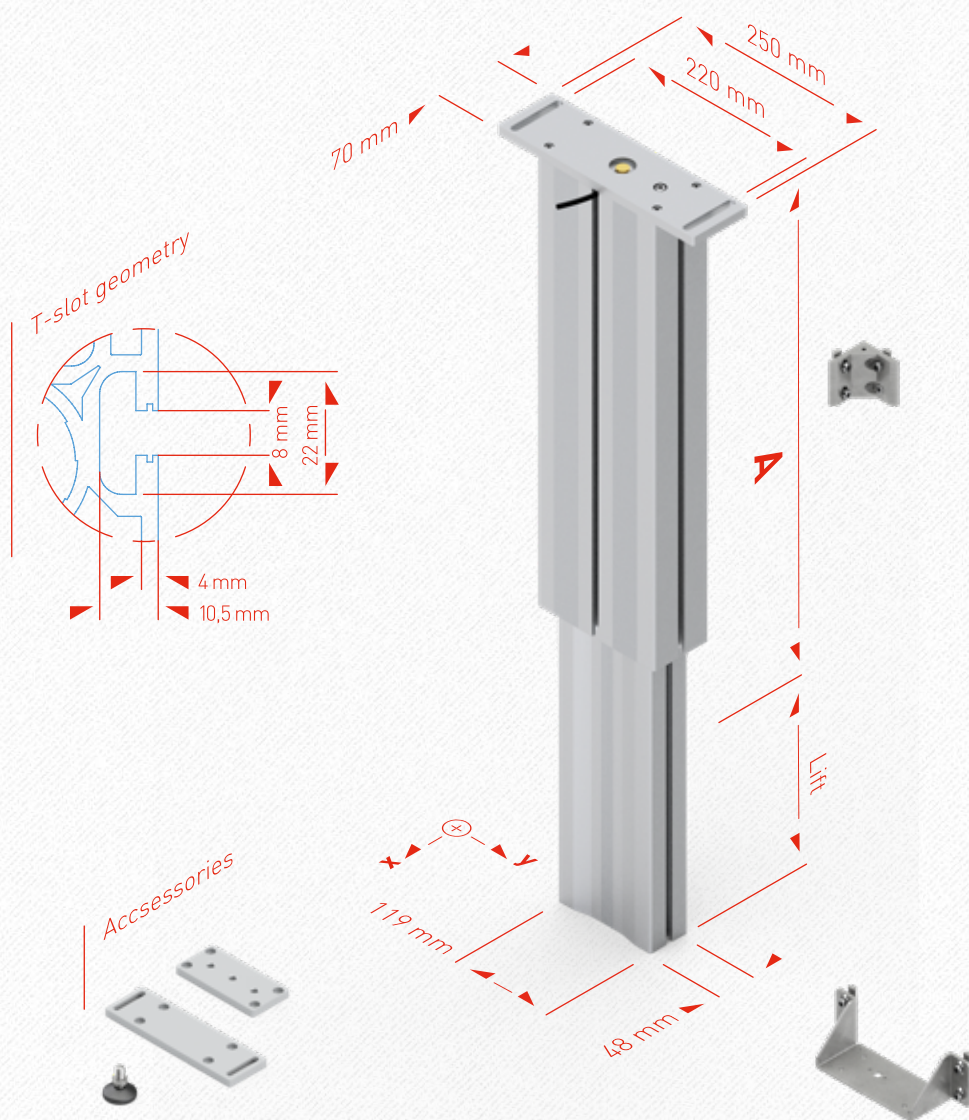
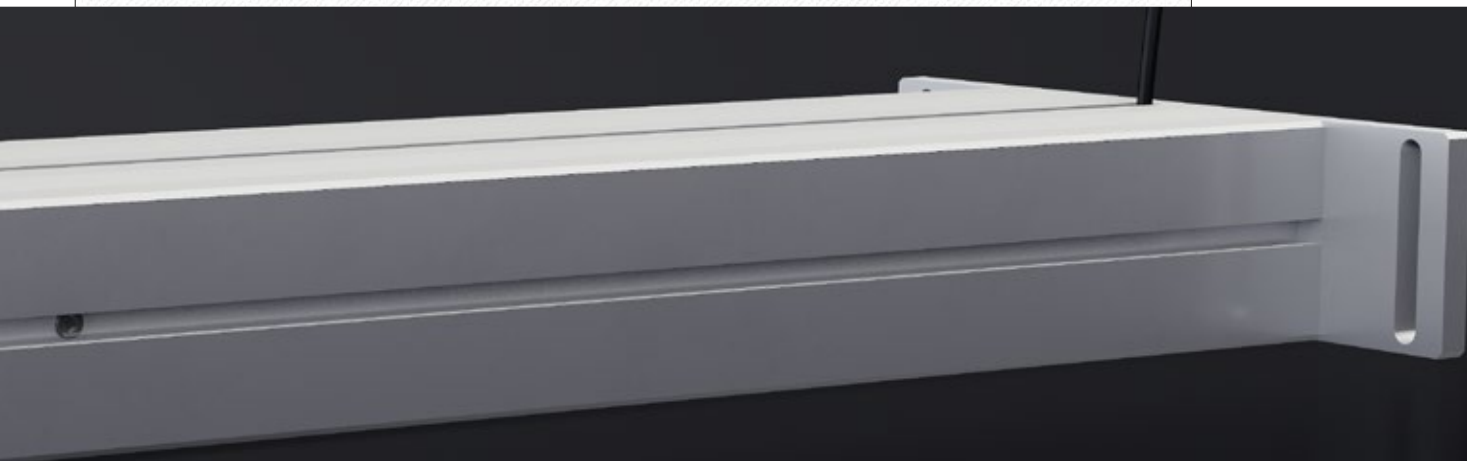
### Application

The table leg **TM** tends to be used when a crank drive or several table legs are required. Up to 10 table legs can be activated at the same time. The hydraulic pump can be operated either by using a hand crank or electronically via cable remote control.

For base frames with 2 legs, we recommend table leg TL or SL. The lifting column SM is equipped for base frames with 4 legs. For further information on the lifting columns SM and SL, please see our Spindle Lifting Systems catalogue.



# Dimensions of **TM**



## Technical data

- Table leg for flexible use with sliding guide
- Max. load per leg:
  - 1500 (TM 14)
  - 2500 (TM 18)
- Synchronous operation of up to 10 legs possible per pump
- Lifting distance 300 or 400 mm
- The lifting speed depends on the pump used
- $M_{bx}$  stat. = 350 Nm\*
- $M_{by}$  stat. = 900 Nm\*\*
- $M_{bx}$  dyn. = 150 Nm\*
- $M_{by}$  dyn. = 450 Nm\*\*
- Colour: plain anodised aluminium

\*  $M_{b}$  stat. = max. permissible bending moment at rest

\*\*  $M_{b}$  dyn. = max. permissible bending moment during lifting movement

Table leg <b>TM</b>		
	<b>A</b>	<b>Lift</b>
<b>TM 1430</b>	530 mm	300 mm
<b>TM 1440</b>	630 mm	400 mm

Detailed CAD drawings in various formats can be found at [www.ergoswiss.com](http://www.ergoswiss.com)