

Elegant and versatile

The table leg **TT** can be used for assembly tables, in assembly units, for office desks, height-adjustable beds and baths and for general use in furniture construction and mechanical engineering.

The T-slots on 3 sides (width 8 mm) allow the addition of crossbars, shelves and other attachments and mountings along the entire length of the leg. Corner combinations and interlinked work stations can also be realized in combination with the **PB** and **PF** pump.

The table leg **TT** consists of two extruded aluminium profiles with a plain anodised finish, guided by plastic gliders. The lifting movement is effected by hydraulic cylinders.

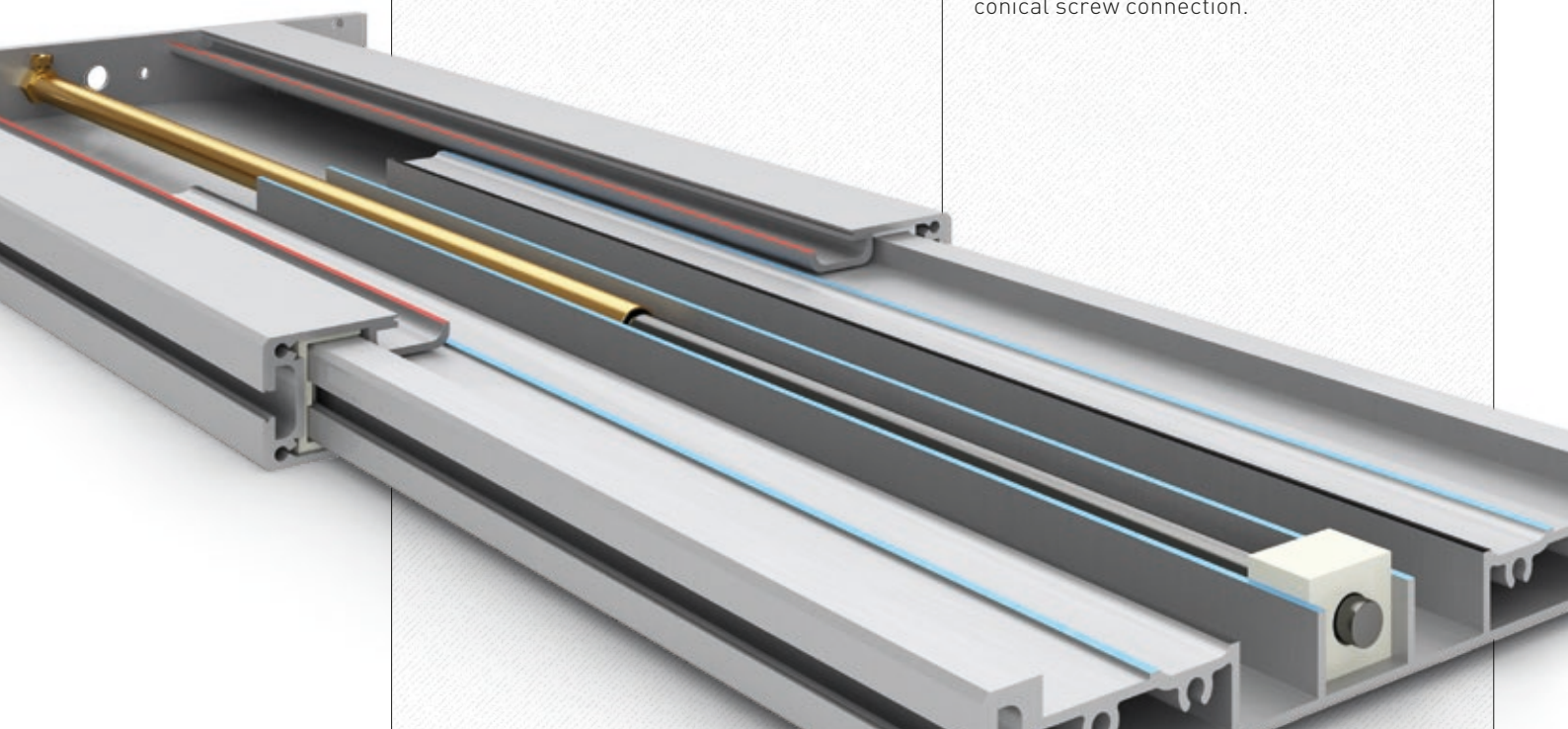
The height is adjusted by means of a hydraulic pump operated by a hand crank or an electric drive unit.

The 3-metre-long high-pressure hose is already mounted on the table leg and vented to ensure easy assembly.

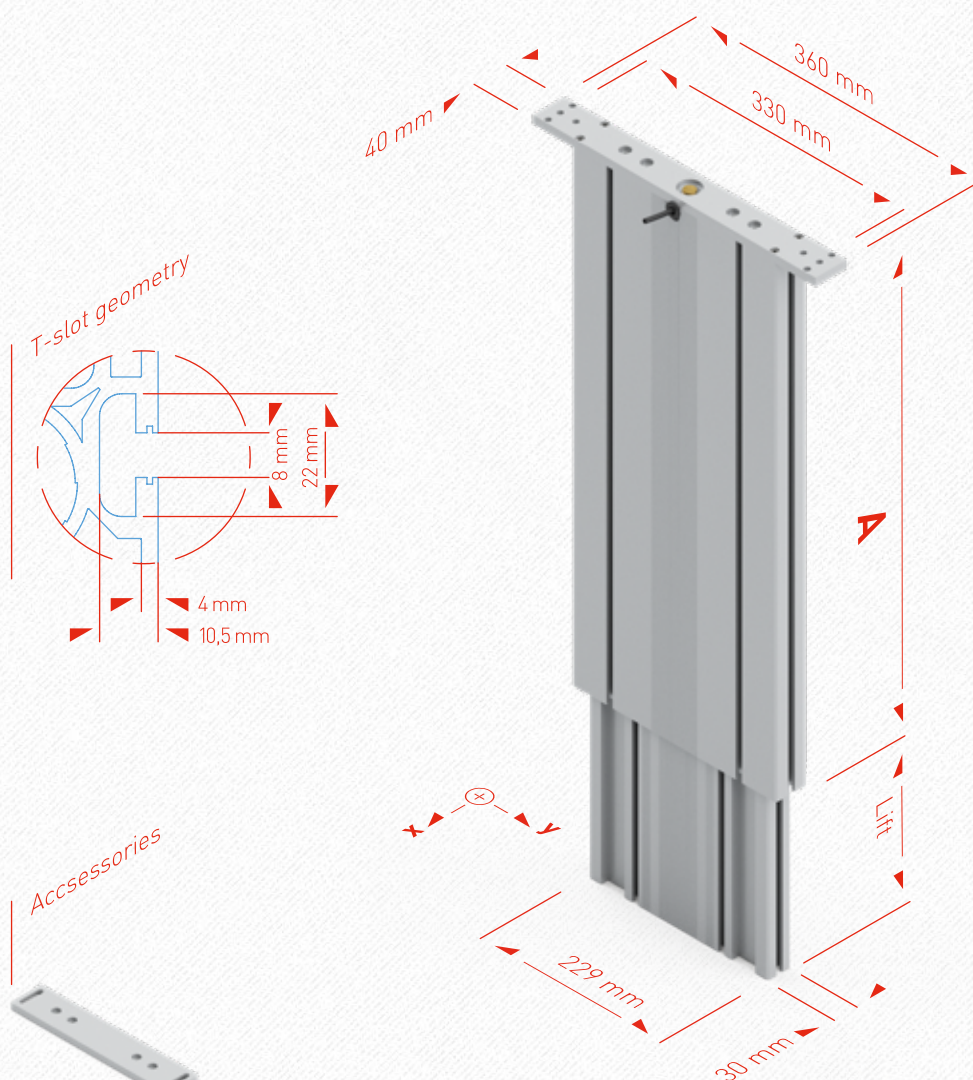
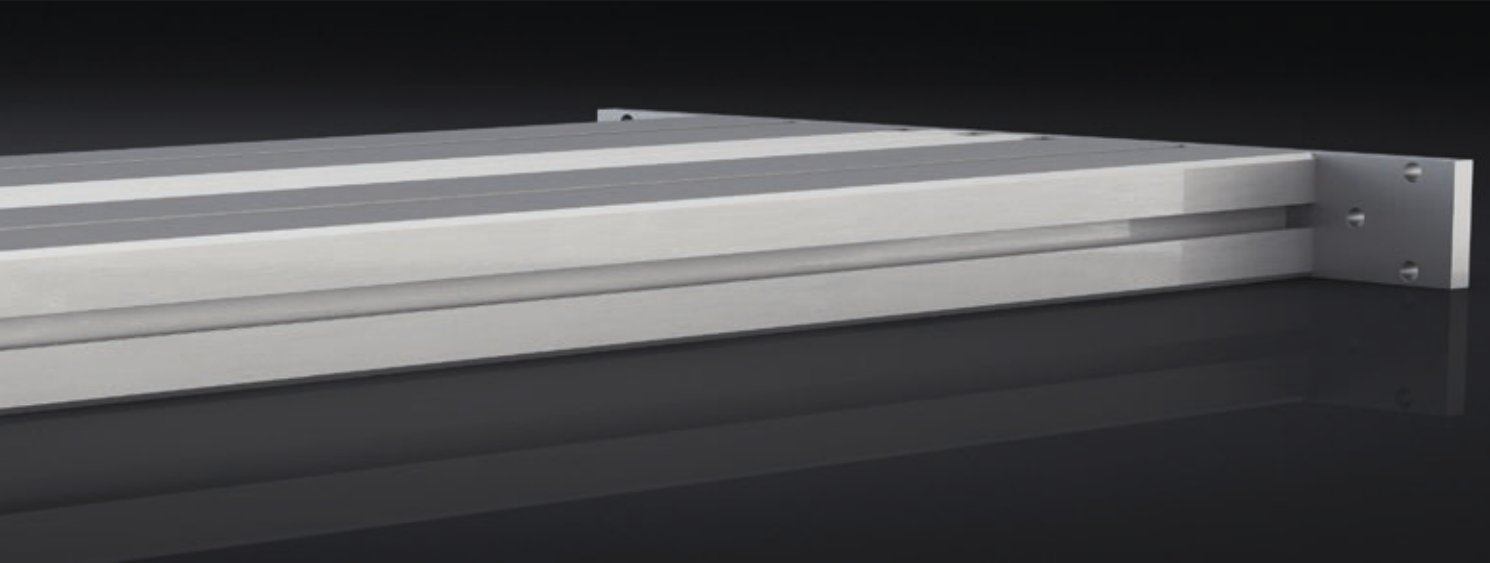
The following accessories are available:

- crossbars of various lengths
- telescopic crossbar
- table feet with adjustable rubber feet
- base plates
- option: ESD version

The crossbars are supplied with pre-fitted universal connectors. These can be pushed into the table legs and fastened in place with a conical screw connection.



Dimensions of TT



Technical data

- Table leg for flexible use with sliding guide
- Max. load per leg:
1500 N (**TT 1440**, **TT 1430**)
2500 N (**TT 1840**, **TT 1830**)
- Please also note the maximum load of the entire system
- Synchronous control of up to 10 table legs
- Lifting distance max. 400 mm
- Max. static bending moment $M_b = 1500 \text{ Nm}$
- Max. dynamic bending moment $M_{b\text{dyn}} = 150 \text{ Nm}$
- plain anodised aluminium

Table leg **TT**

	A
TT 1430	530 mm
TT 1440	630 mm
TT 1830	532 mm
TT 1840	632 mm