

**Verbindungswinkel, 2-loch, 1 Nut**

**Connection Angle, 2 Bore Holes, 1 Slot Version**

**Beschreibung** zur rechtwinkligen Verbindung von zwei Aluminiumprofilen

**Material** Aluminium

**Oberfläche** eloxiert

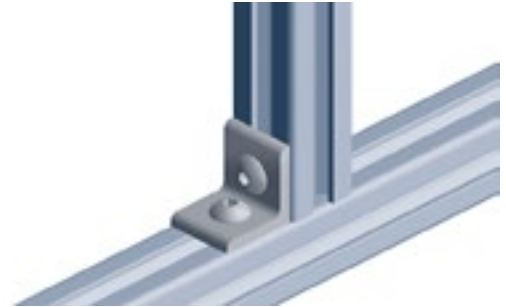
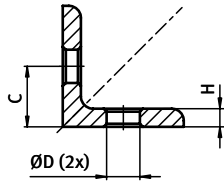
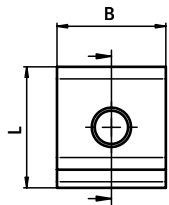
**Liefereinheit** 10 Stück

**Description** To connect two aluminum profiles at right angles

**Material** Aluminum

**Surface** Anodized

**Pack Quantity** 10 pieces



Verbindungswinkel <i>Connection Angle</i>	L [mm]	B [mm]	H [mm]	C [mm]	ØD [mm]	Gewicht [g] <i>Weight [mm]</i>	Teil-Nr. <i>Part #</i>
20	20.0	18.0	3.0	10.0	5.5	5.0	093WD20
25	25.0	25.0	4.0	12.5	7.0	12.0	093WD25
30	30.0	30.0	5.0	15.0	7.0	21.0	093WD30
38	38.0	38.0	6.0	19.0	9.0	41.0	093WD38
40	40.0	36.0	6.0	20.0	9.0	42.0	093WD40
45	45.0	41.0	6.0	22.5	9.0	55.0	093WD45