



## Verbindersplatte

## Connection Plate

**Beschreibung** Stahl, ab Profil 30  
zur Verbindung von zwei Aluminiumprofilen

**Material** Stahl

**Oberfläche** schwarz pulverbeschichtet / blau verzinkt

**Befestigung** Senkschrauben

**Liefereinheit** 10 Stück

**Extras** weitere Oberflächen, weitere Farben auf Anfrage

**Description** *Steel, Profile 30 and up*  
*To connect two aluminum profiles*

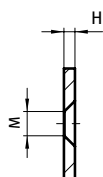
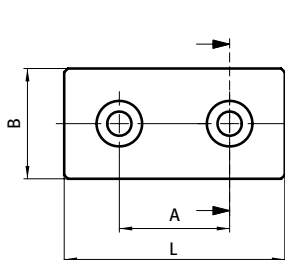
**Material** *Steel*

**Surface** *Black powder coated / blue zinc plated*

**Fastening** *Countersunk screws*

**Pack Quantity** *10 pieces*

**Specials** *Other surfaces, other colors on request*



Verbindersplatte  
*Connection Plate*

	L [mm]	B [mm]	A [mm]	H [mm]	für Schraube for Screw	Gewicht [g] Weight [g]	Teil-Nr. Part #
schwarz pulverbeschichtet <i>Black powder coated</i>	60.0	30.0	30.0	3.0	M6	36.0	<a href="#">093V3060S</a>
	80.0	40.0	40.0	5.0	M8	116.0	<a href="#">093V4080S</a>
	90.0	45.0	45.0	5.0	M8	149.0	<a href="#">093V4590S</a>
blau verzinkt <i>Blue zinc plated</i>	60.0	30.0	30.0	3.0	M6	36.0	<a href="#">093V3060V</a>
	80.0	40.0	40.0	5.0	M8	116.0	<a href="#">093V4080V</a>
	90.0	45.0	45.0	5.0	M8	149.0	<a href="#">093V4590V</a>