



Innenliegendes Scharnier-Element

Concealed Hinge Component

Beschreibung Aluminium, eloxiert für Flächenelemente und Aluminiumprofile, zur individuellen Zusammenstellung von innenliegenden Scharnieren

Material Flügel: Aluminium
Achse: Edelstahl

Oberfläche eloxiert

Befestigung vorderseitig mit Senkschrauben

Liefereinheit 10 Stück

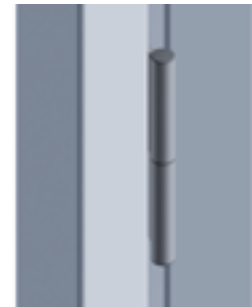
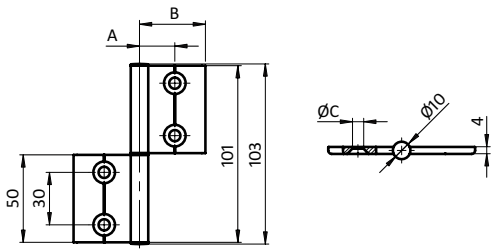
Description Aluminum, Anodized For panels and aluminum profiles, for individual assembly of concealed hinges

Material Wing: Aluminum
Bolt: Stainless steel

Surface Anodized

Fastening From the front, using countersunk screws

Pack Quantity 10 pieces



| Innenliegendes Scharnier <i>Internal Hinge</i> | A [mm] | B [mm] | C [mm] | Gewicht [g] <i>Weight [g]</i> | F _{Amax} [N] | F _{Rmax} [N] | Teil-Nr. <i>Part #</i> |
|---|-----------|-----------|-----------|----------------------------------|--------------------------|--------------------------|---------------------------|
| 20 | 14.5 | 22.0 | Ø 5.3 | 15.0 | 150 | 100 | 095AI20 |
| 25 | 17.5 | 28.0 | Ø 6.4 | 18.0 | 150 | 100 | 095AI25 |
| 30 | 19.5 | 32.0 | Ø 6.4 | 20.0 | 150 | 100 | 095AI30 |
| 38 | 21.1 | 40.1 | Ø 6.4 | 24.0 | 150 | 100 | 095AI38 |
| 40 | 25.0 | 42.0 | Ø 6.4 | 25.3 | 150 | 100 | 095AI40 |
| 45 | 27.0 | 47.0 | Ø 6.4 | 28.0 | 150 | 100 | 095AI45 |
| 50 | 29.5 | 52.0 | Ø 6.4 | 30.7 | 150 | 100 | 095AI50 |
| 60 | 34.5 | 62.0 | Ø 6.4 | 36.0 | 150 | 100 | 095AI60 |
| Achse <i>Bolt</i> | - | - | - | 12.0 | - | - | 095AIR01 |
| Abdeckkappe <i>Cover Cap</i> | - | - | - | 0.15 | - | - | 095AIA |

