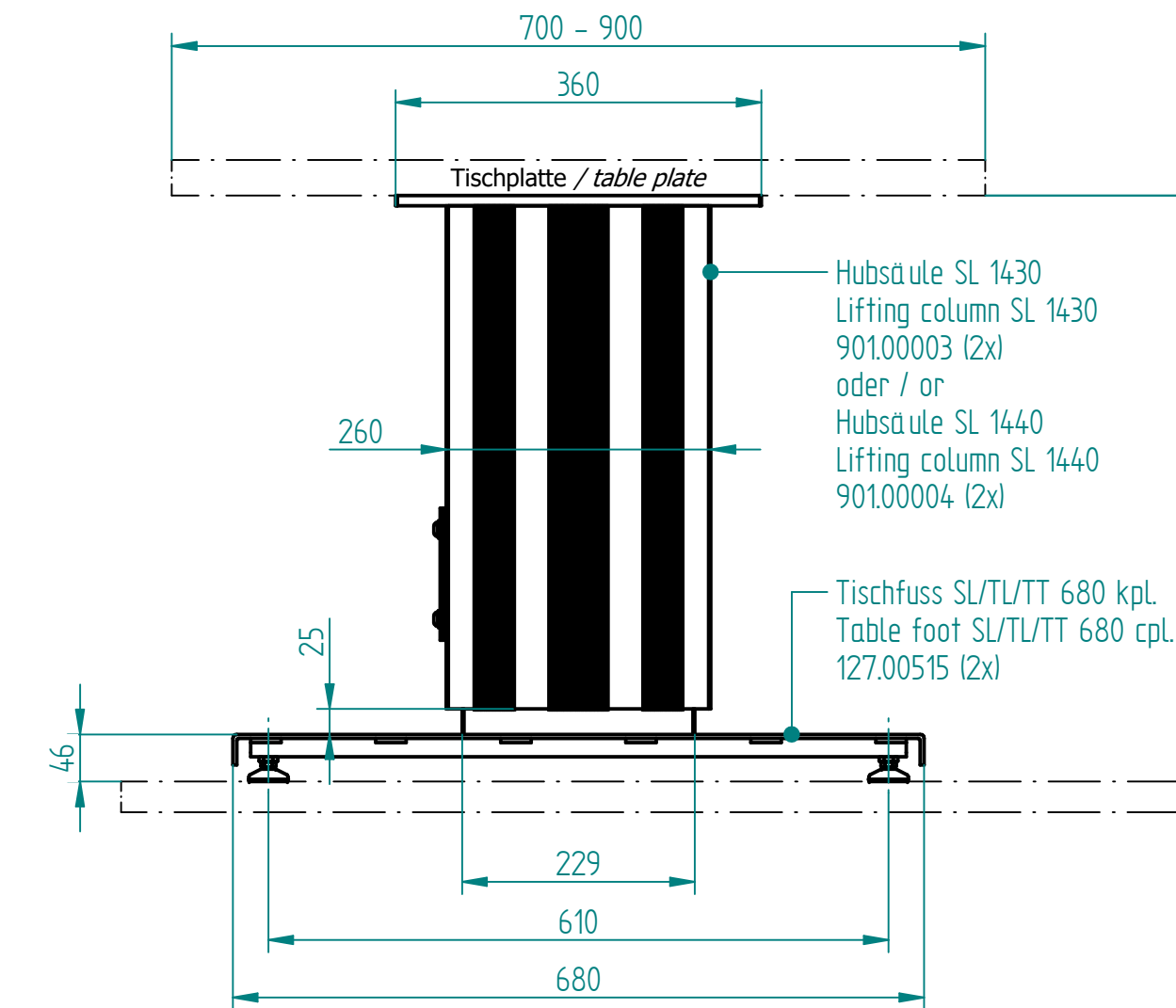
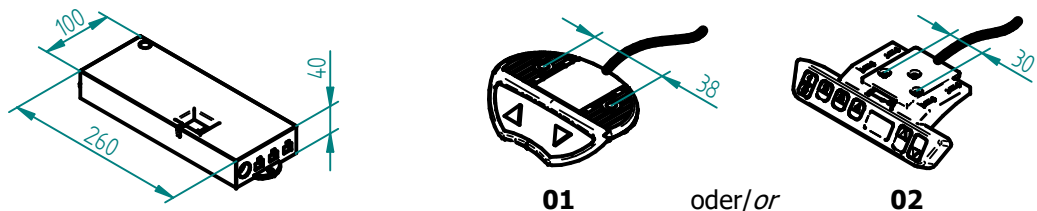


beigelegt / enclosed:

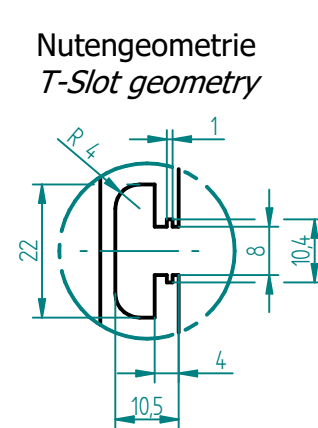
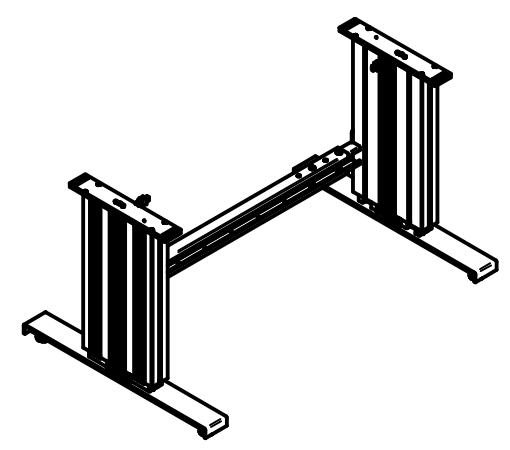
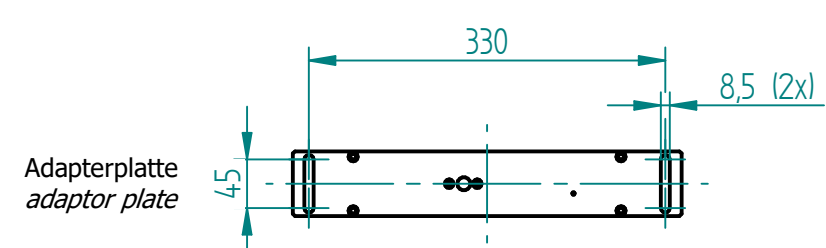
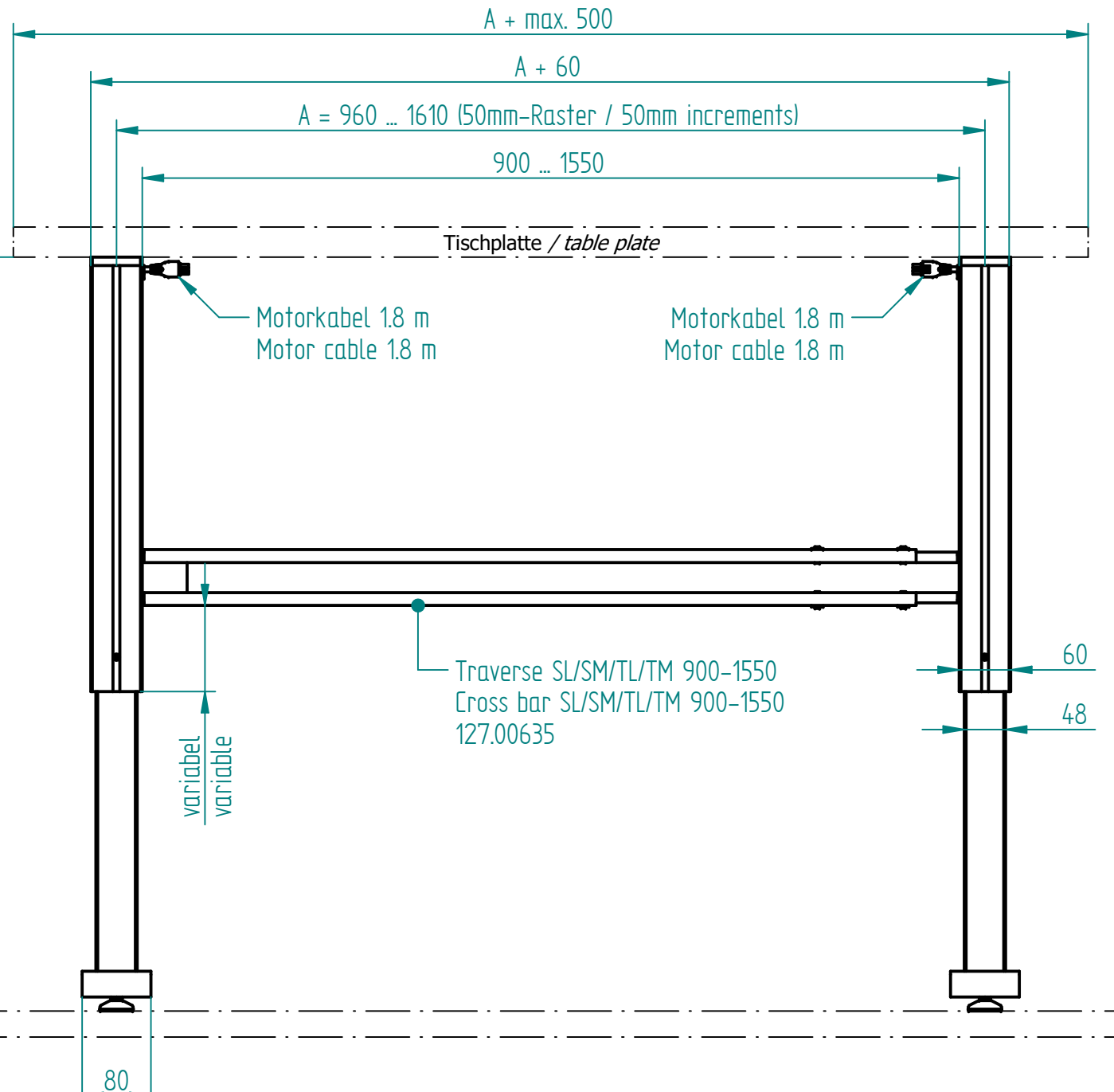
- Steuerung compact-3-eco / control box compact-3-eco
- XX = länderspez. Netzkabel / XX = country specific power cable
- 01 = Kabelfernbedienung D Auf-Ab / 01 = cable remote control D up-down oder / or
- 02 = Kabelfernbedienung D Memory / 02 = cable remote control D Memory
- Befestigungsschrauben für Tischplatte / mounting screws for table plate



Hub / Stroke

H

1:20



Technische Daten / technical specifications	
max. Traglast pro Hubsäule / max. load per lifting column	2000 N
max. Systembelastung / max. system load	4000 N
max. statische Zugbelastung / max. static tensile load	500 N
max. dynamische Zugbelastung / max dynamic tensile load	50 N
max. Hub / max. stroke	300 mm / 400 mm
Hubgeschwindigkeit / lifting speed	12 mm/s
Aluminiumprofile / aluminium profiles	farblos eloxiert / colorless anodized
Führungsart / type of guidance	Gleitführung (Kunststoff) / slide (plastics)

Name	Hub / Stroke	H	XX = EU	XX = CH	XX = US
SL-2 1430 960-1610 XX 01	300	577	901.30001	901.30101	901.30401
SL-2 1430 960-1610 XX 02	300	577	901.30008	901.30108	901.30408
SL-2 1440 960-1610 XX 01	400	677	901.30051	901.30151	901.30451
SL-2 1440 960-1610 XX 02	400	677	901.30058	901.30158	901.30458

Index	Datum / Date	Name	Änderungsmittelung / notification of change	
01	26.03.2019	tiho	1050: Innenprofil neu ohne T-Nut	
GEZEICHNET / DRAWN	20.11.2017	tiho	GEWICHT / WEIGHT	BEZEICHNUNG / ASSEMBLY NAME
GEPRÜFT / CHECKED	20.11.2017	anhe	MABSTAB / SCALE	1:7
ERGO SWISS Dynamic Systems			ZEICHNUNGSNUMMER / DRAWING NUMBER	ARTIKELNUMMER / ASSEMBLY NUMBER
			a-901.023	901.30XXX
			INDEX	FORMAT
			01	A3