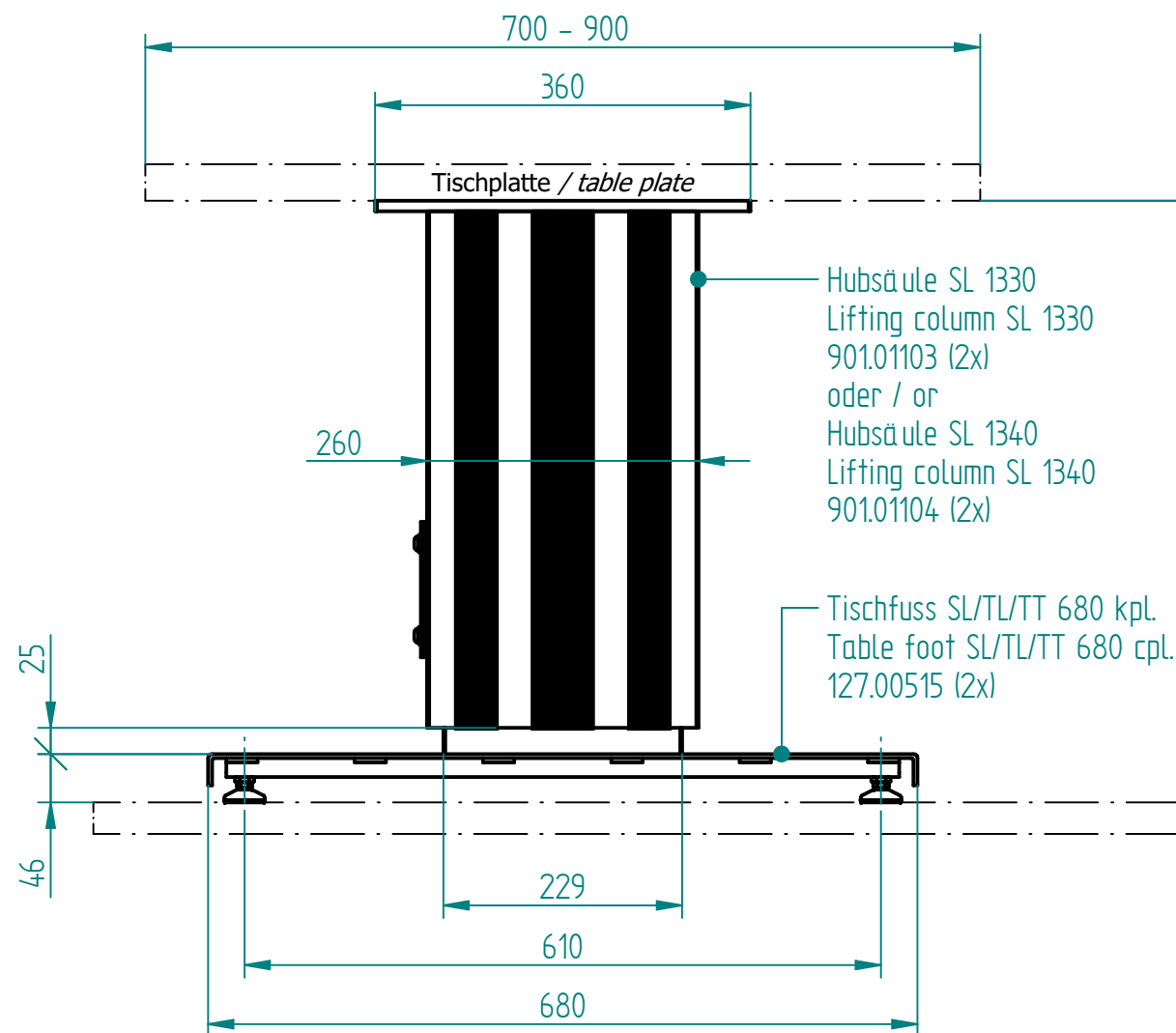
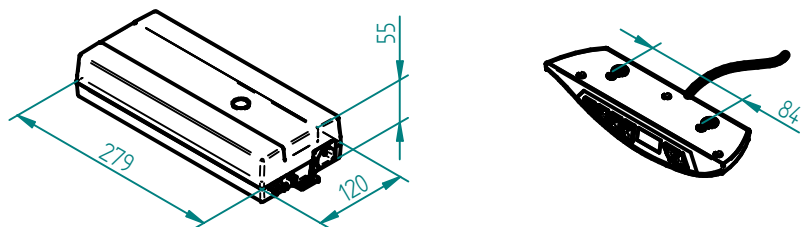


beigelegt / enclosed:

- Steuerung SCT iSMPS / control box SCT iSMPS
- XX = länderspez. Netzkabel / XX = country specific power cable
- 12 = Kabelfernbedienung SCT Memory / 12 = cable remote control SCT Memory
- Befestigungsschrauben für Tischplatte / mounting screws for table plate

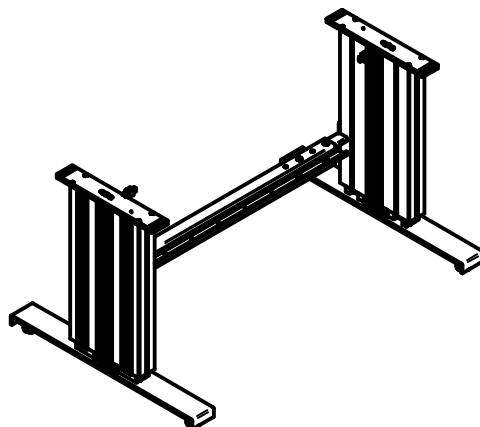
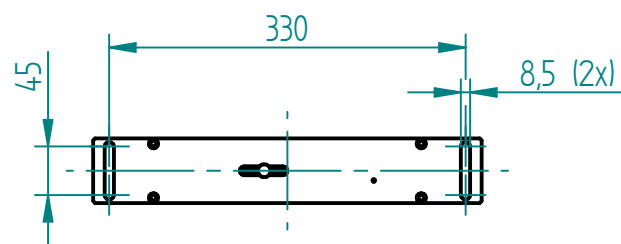


Hub / Stroke

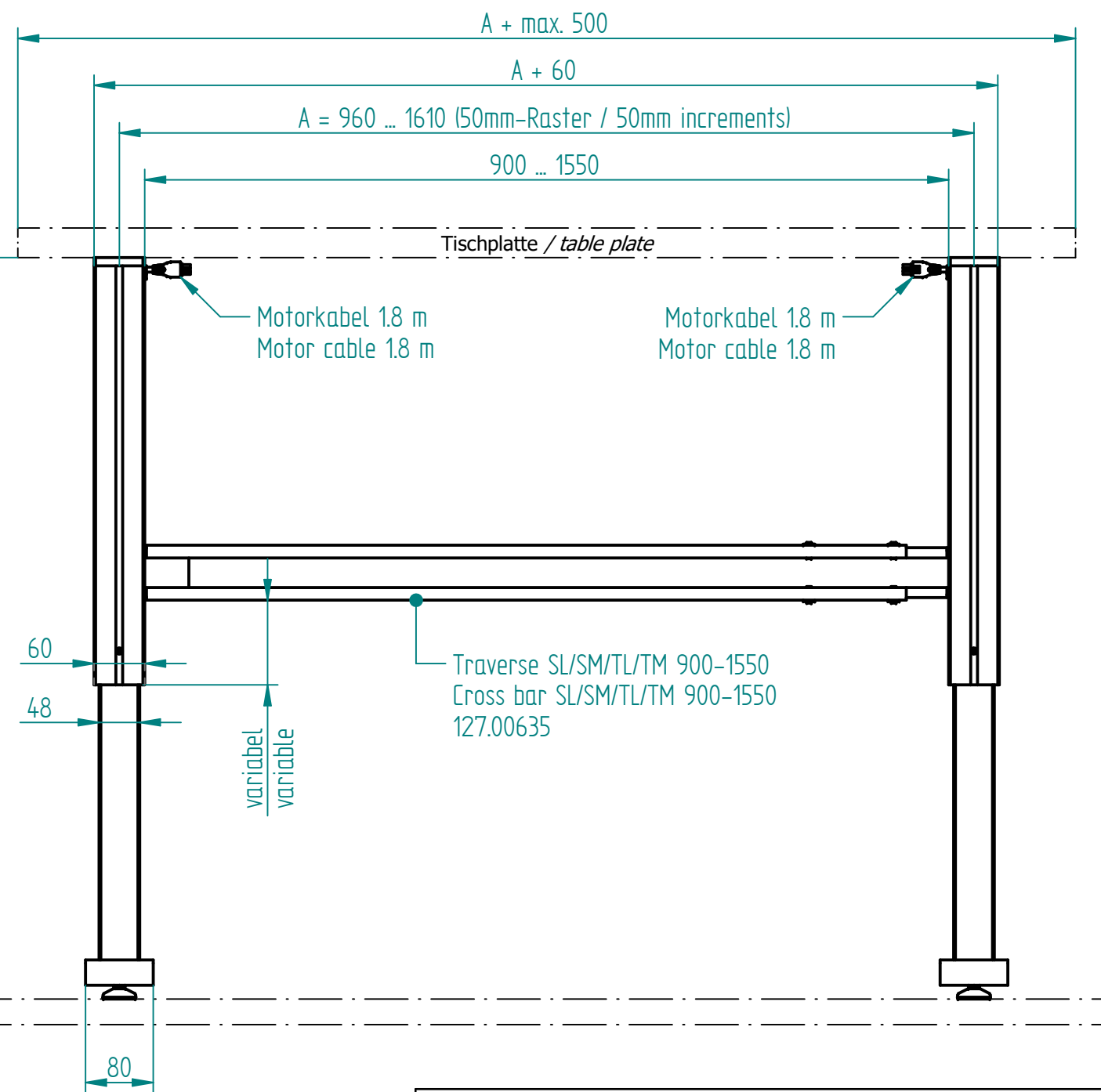
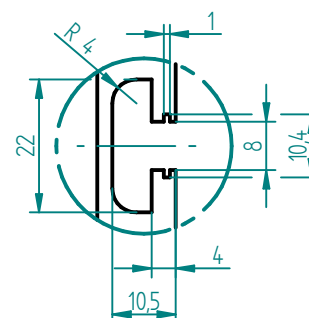
H

1:20

Adapterplatte  
adaptor plate



Nutengeometrie  
T-Slot geometry



Technische Daten / technical specifications	
max. Traglast pro Hubsäule / max. load per lifting column	3'000 N
max. Systembelastung / max. system load	6'000 N
max. statische Zugbelastung / max. static tensile load	500 N
max. dynamische Zugbelastung / max dynamic tensile load	50 N
max. Hub / max. stroke	300 mm / 400 mm
Hubgeschwindigkeit / lifting speed	abhängig von Systemlast / depending on system load
Aluminiumprofile / aluminium profiles	farblos eloxiert / colorless anodized
Führungsart / type of guidance	Gleitführung (Kunststoff) / slide (plastics)

Name	Hub / Stroke	H	XX = EU	XX = CH	XX = US
SL-2 1330 960-1610 XX 12	300	577	901.51016	901.51116	901.51216
SL-2 1340 960-1610 XX 12	400	677	901.51017	901.51117	901.51217

Index	Datum / Date	Name	Änderungsmittelung / notification of change
GEZEICHNET / DRAWN	05.02.2020	tiho	GEWICHT / WEIGHT
GEPRÜFT / CHECKED	05.02.2020	anhe	BEZEICHNUNG / ASSEMBLY NAME
MABSTAB / SCALE 1:7 <b>ERGO SWISS</b> Dynamic Systems			Untergestell SL-2 13X0 960-1610 XX XX Frame SL-2 13X0 960-1610 XX XX <b>901.51XXX</b>
ZEICHNUNGSNUMMER / DRAWING NUMBER <b>a-901.123</b>			ARTIKELNUMMER / ASSEMBLY NUMBER <b>901.51XXX</b>
			INDEX <b>00</b>
			FORMAT <b>A3</b>