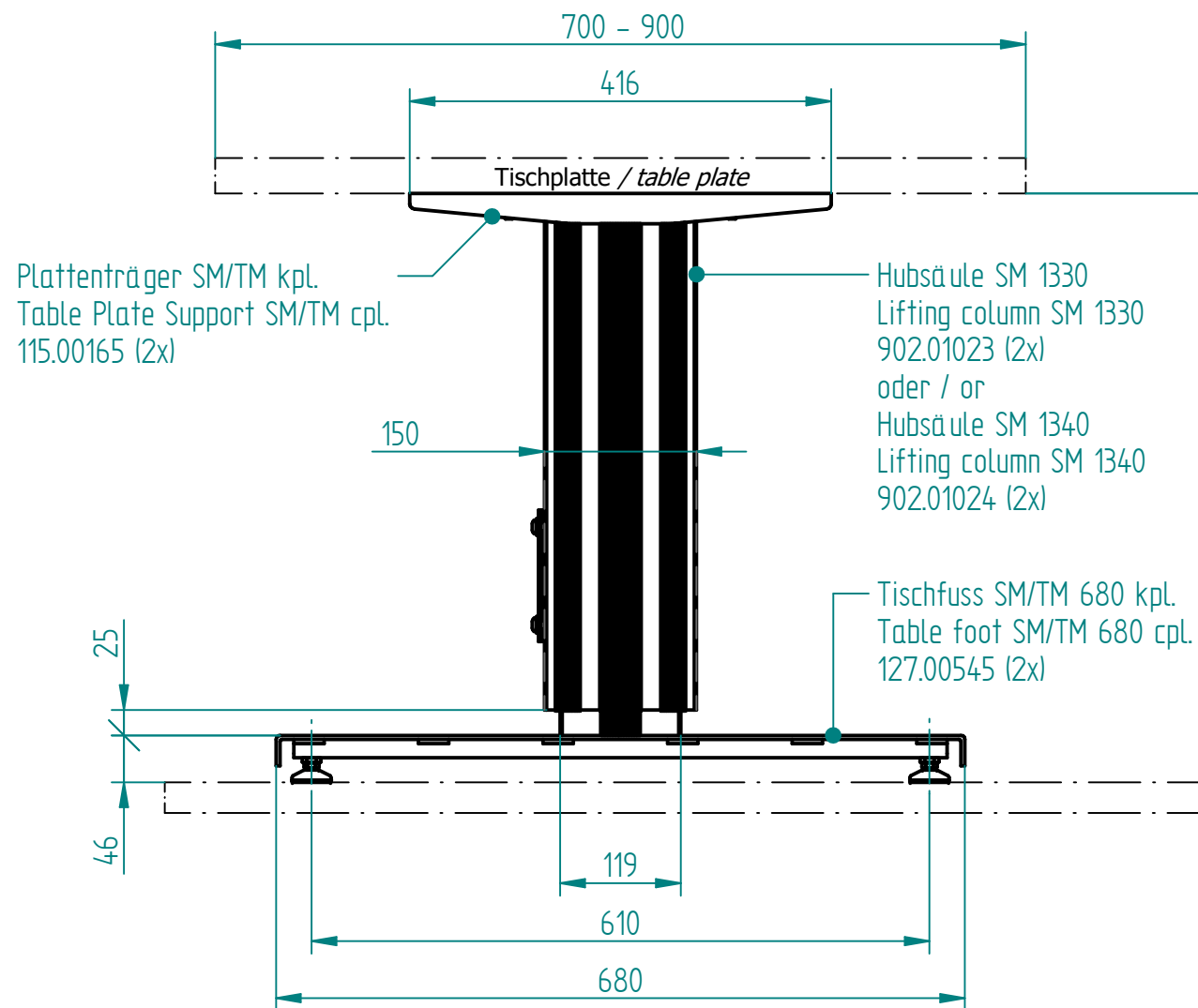
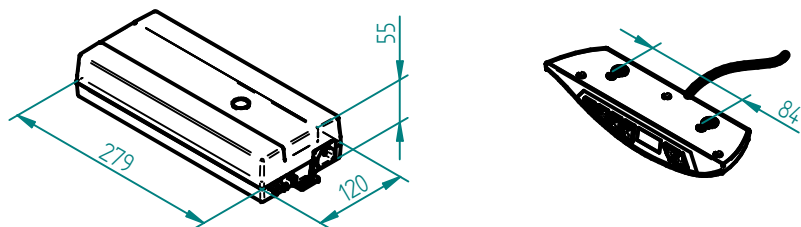


beigelegt / enclosed:

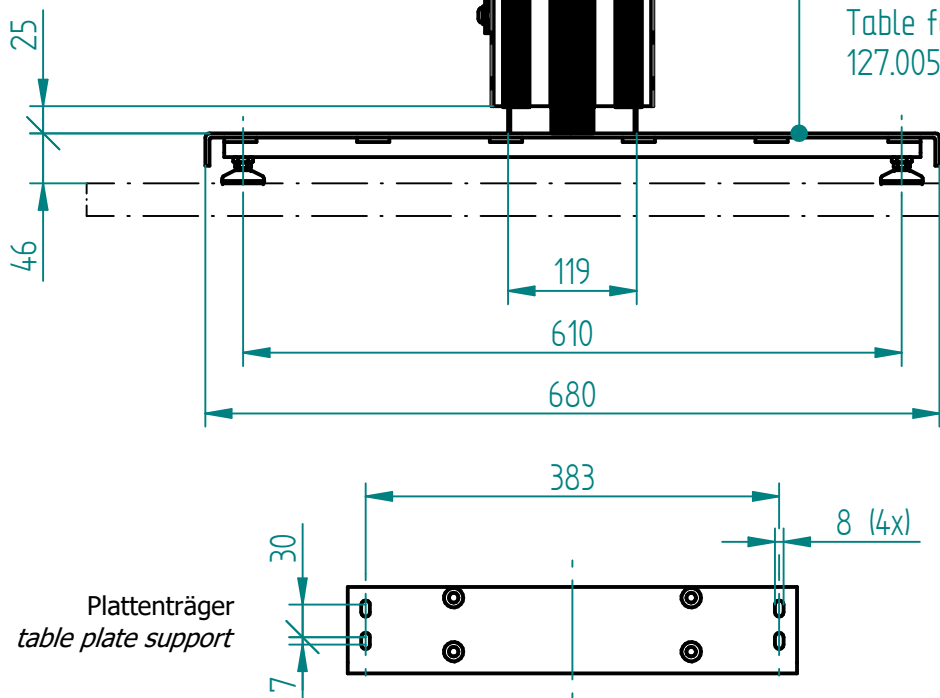
- Steuerung SCT iSMPS / control box SCT iSMPS
- XX = länderspez. Netzkabel / XX = country specific power cable
- 12 = Kabelfernbedienung SCT Memory / 12 = cable remote control SCT Memory
- Befestigungsschrauben für Tischplatte / mounting screws for table plate



Plattenträger SM/TM kpl.
Table Plate Support SM/TM cpl.
115.00165 (2x)

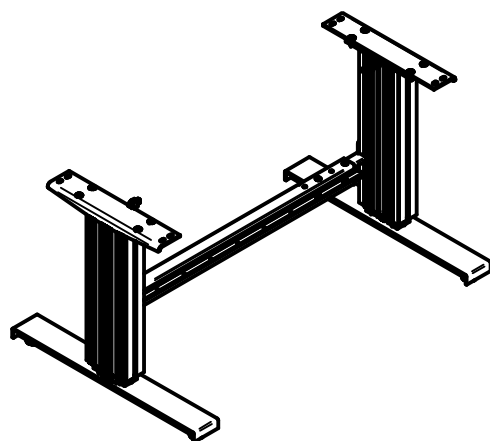
Hubsäule SM 1330
Lifting column SM 1330
902.01023 (2x)
oder / or
Hubsäule SM 1340
Lifting column SM 1340
902.01024 (2x)

Tischfuss SM/TM 680 kpl.
Table foot SM/TM 680 cpl.
127.00545 (2x)

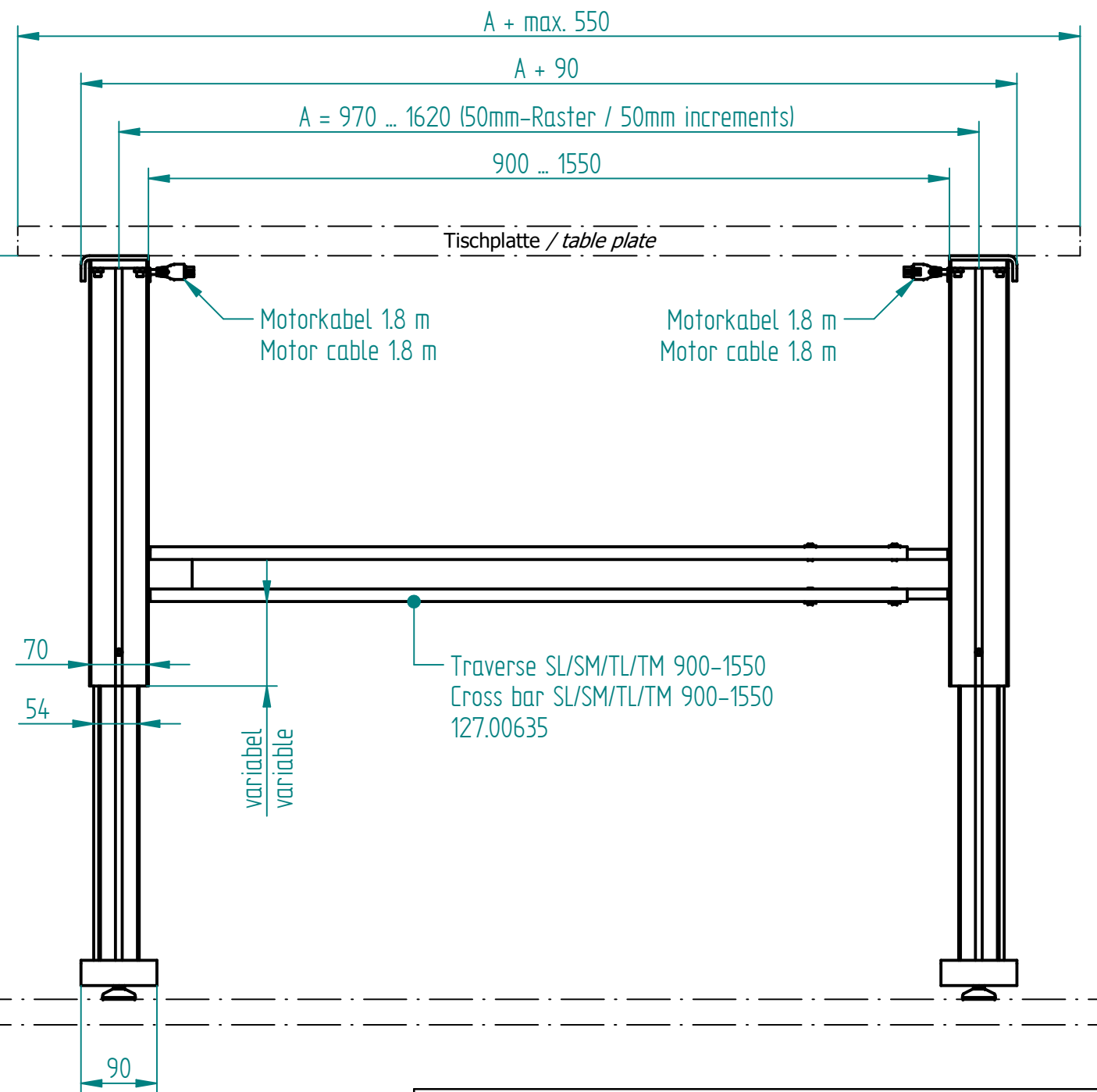
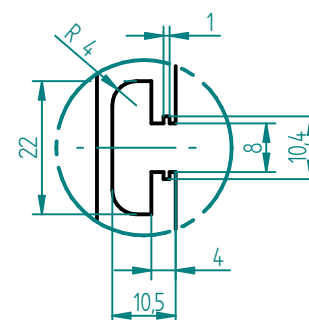


Plattenträger
table plate support

1:20



Nutengeometrie
T-Slot geometry



A + max. 550

A + 90

A = 970 ... 1620 (50mm-Raster / 50mm increments)

900 ... 1550

Tischplatte / table plate

Motorkabel 1.8 m
Motor cable 1.8 m

Motorkabel 1.8 m
Motor cable 1.8 m

Traverse SL/SM/TL/TM 900-1550
Cross bar SL/SM/TL/TM 900-1550
127.00635

variabel
variable

Technische Daten / technical specifications	
max. Traglast pro Hubsäule / max. load per lifting column	3'000 N
max. Systembelastung / max. system load	6'000 N
max. statische Zugbelastung / max. static tensile load	500 N
max. dynamische Zugbelastung / max dynamic tensile load	50 N
max. Hub / max. stroke	300 mm / 400 mm
Hubgeschwindigkeit / lifting speed	abhängig von Systemlast / depending on system load
Aluminiumprofile / aluminium profiles	farblos eloxiert / colorless anodized
Führungsart / type of guidance	Gleitführung (Kunststoff) / slide (plastics)

Name	Hub / Stroke	H	XX = EU	XX = CH	XX = US
SL-2 1330 970-1620 XX 12	300	582	902.51016	902.51116	902.51216
SL-2 1340 970-1620 XX 12	400	682	902.51017	902.51117	902.51217

Index	Datum / Date	Name	Änderungsmittteilung / notification of change		
GEZEICHNET / DRAWN	05.02.2020	tiho	GEWICHT / WEIGHT	BEZEICHNUNG / ASSEMBLY NAME	
GEPRÜFT / CHECKED	05.02.2020	anhe	MAßSTAB / SCALE	Untergestell SM-2 13X0 970-1620 XX XX	
			ZEICHNUNGSNUMMER / DRAWING NUMBER	ARTIKELNUMMER / ASSEMBLY NUMBER	INDEX
			a-902.123	902.51XXX	00
					A3