



Profilgleiter flach

Profile Slider Flats

Nut **6**, 8, 10

Beschreibung zur gleitenden Führung von Profilen mit Nuten;
ökonomische und verschleißarme Lösung,
z. B. für Flächenelemente

Material Kunststoff POM

Oberfläche natur

Befestigung mit Blechschrauben

Liefereinheit 10 Stück

Slot **6**, 8, 10

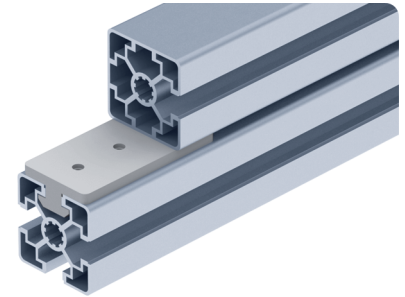
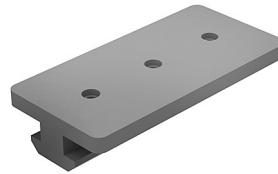
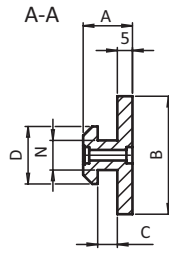
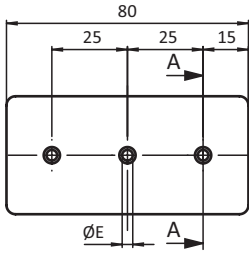
Description To guide slidingly profiles with slot;
economic and wear-resistant solution,
e.g. for panels

Material Plastic POM

Surface nature

Fastening with sheet-metal screws

Pack Quantity 10 pieces



Profilgleiter flach
Profile Slider Flat

N	A [mm]	B [mm]	C [mm]	D [mm]	E [mm]	Gewicht [g] Weight [g]		Teil-Nr. Part #
6	9.8	17.0	2.3	11.5	2.8	13.0	B	093SM06S02
8	11.5	26.0	3.0	15.0	2.8	22.0	B	093SM08S02
10	16.3	39.0	6.5	19.0	3.5	37.0	B	093SM10S02