



Nutenstein 17,0 x 9,6 mm

T-slot Nut 17.0 x 9.6 mm

Nut 8, mit Federkugel,
Stahl / Edelstahl

Beschreibung Nutenstein mit Führungssteg und Federkugel

Material Nutenstein: Stahl, verzinkt / Edelstahl 1.4301 / 1.4305
 Profil: Stahl, blank / Edelstahl 1.4301 / 1.4305
 Kugel: Edelstahl

Liefereinheit 100 Stück

Extras elektrostatisch ableitfähig, verschiedene Längen mit mehreren Gewinden in unterschiedlichen Größen auf Anfrage

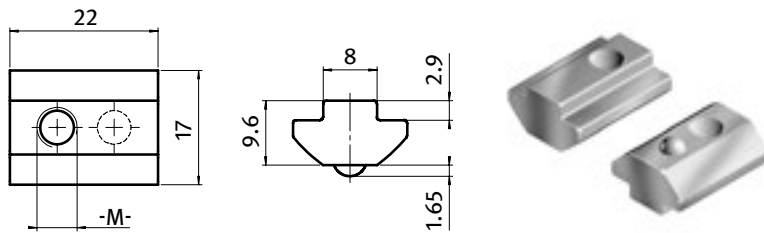
Slot 8, with Spring Loaded Ball,
Steel / Stainless Steel

Description Self-aligning T-slot nut with spring loaded ball

Material T-slot nut:
Zinc plated steel / stainless steel SS304 / SS303
 Rod: Steel / stainless steel SS304 / SS303
 Ball: Stainless steel

Pack Quantity 100 pieces

Specials electrostatically conductive, different lengths with multiple threads in different sizes available on request



| Nutenstein <i>T-slot Nut</i> | Größe <i>Size</i> | Gewicht [g] <i>Weight [g]</i> | Teil-Nr. <i>Part #</i> |
|----------------------------------|----------------------|----------------------------------|-----------------------------|
| Stahl <i>Steel</i> | M4 | 19.0 I | 096064 |
| | M5 | 18.5 I | 096065 |
| | M6 | 18.0 I | 096066 |
| | M8 | 17.0 I | 096068 |
| Edelstahl <i>Stainless Steel</i> | M6 | 18.0 I | 096066E |
| | M8 | 17.0 I | 096068E |
| Profil Stahl <i>Rod, steel</i> | 1500 mm | 1344.0 I | 096060.1500 |